

# Lightweight & Eco-friendly Asphalt Roofs



NATIONAL  
TEST HOUSE  
TESTED



# About Skylanes Asphalt Roofing Sheets

Asphalt Roofing sheets are commonly used in more than 140 countries all over the world. It is an eco-friendly product and does not contain any materials hazardous to health. It is made using Bitumen saturated organic fibres under extreme heat and pressure. It is lightweight, simple to handle and can withstand all types of weather conditions.

Our sheets have proven to survive extreme temperatures, heavy rainfall, cyclones, storms, etc. During heavy winds, it guarantees protection due to its lightweight properties by not falling and harming people or damaging property.

As opposed to other roofing sheets, Asphalt Roofing sheets drastically minimise rain noise. They're also an effective roofing solution to reduce heat, as this product has the inherent capacity to reduce high temperatures. It is an inexpensive option in comparison to other Roofing sheets considering all the features it possesses.

## About us

The parent company Light Roofings Ltd. was established in 1969 and started production of the Asphalt corrugated sheets at Chengalpattu, Tamilnadu and it was the first of its kind to be produced in the country. Observing the rising demand for lightweight roofing in the 1980s, Skylanes and Allied Products Private Limited was incorporated in 1989 and is the sole manufacturer of Asphalt Lightweight Roofing Sheets in India till date. For over 30 years until now, the core business has focused exclusively on the Indian market and has exported to other regions as well.

Skylanes Asphalt Roofs have National Test House Certification and are also certified under the quality management system ISO 9001:2015 and ISO 14001:2015 for Environmental management system. In the year 2024 Skylanes and Allied Products Private Limited has entered into a Joint Venture with Paramount Intercontinental Pvt. Ltd. and Parabatai Technotech Pvt Ltd as the sole Marketing, Sales & Installation company pan India.

## Our Vision

**"We aim to manufacture quality products at an affordable price!"**

## Advantages



Suitable for all weather



No health hazards



Lite weight & stronger



Low structural cost



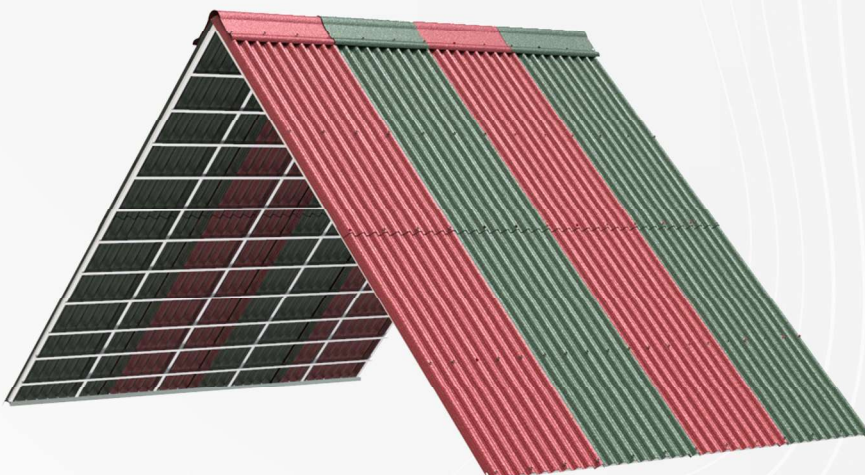
Rust free



Heat resistance



Sound resistance



# Specifications

## SKYLANES BASIC (CLASSIC PROFILE) (6x3)

Material	Length	Width	Thickness	Width of corrugation	Height of corrugation	No. of corrugations per sheet
Organic fibre Bitumen	1830 mm	900 mm	2 mm	91 mm	32 mm	10

## SKYLANES ULTRA (CLASSIC PROFILE) (6½ x3)

Material	Length	Width	Thickness	Width of corrugation	Height of corrugation	No. of corrugations per sheet
Organic fibre Bitumen	2000 mm	900 mm	3 mm	91 mm	32 mm	10

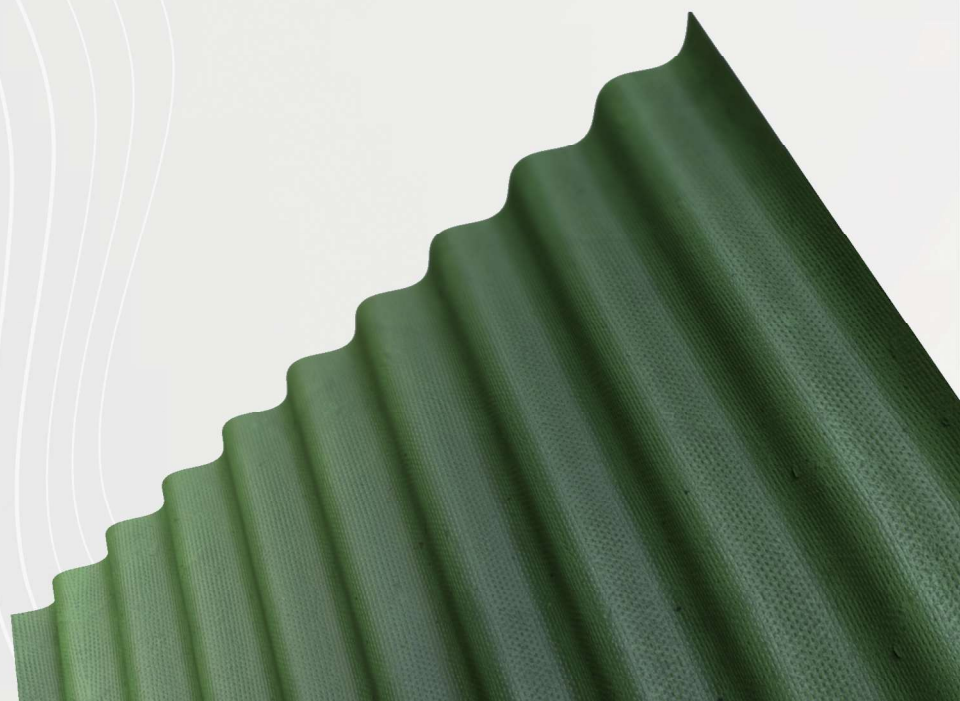
## SKYLANES BIG 6 (6½ x2½)

Material	Length	Width	Thickness	Width of corrugation	Height of corrugation	No. of corrugations per sheet
Organic fibre Bitumen	2000 mm	780 mm	2 mm	96 mm	55 mm	6

## SKYLANES PLAIN BOARD (6x3)

Material	Length	Width	Thickness
Organic fibre Bitumen	1830 mm	900 mm	2 mm

## Colours available



# Product Variants

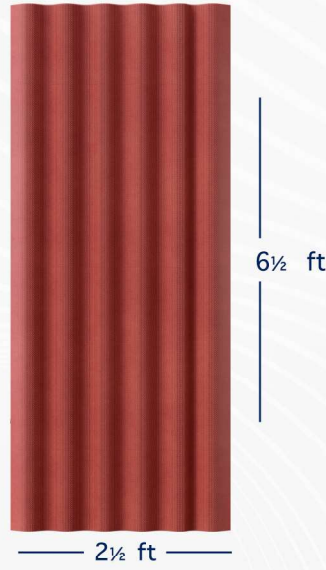
**SKYLANES BASIC  
(CLASSIC PROFILE)**  
**(6x3)**



**SKYLANES ULTRA  
(CLASSIC PROFILE)**  
**(6½ x3)**



**SKYLANES BIG 6**  
**(6½ x 2½)**



## Usages of Skylanes BIG 6

Skylanes BIG 6 can be fixed on the existing structure of your Asbestos Roofs with Bitumen Washers. It will Reduce heat, Sound & can also be used in a particular damaged part. It is Light weight, and easy to handle. There is No algae formation, No Corrosion and Gives an Attractive & Aesthetic Look!

**SKYLANES  
PLAIN BOARD**  
**(6 x3)**



## Accessories



**SKYLANES  
RIDGE**  
**(3x1)**



**SKYLANES  
SCREW**  
**(SIZE : 12 x 55 mm)**

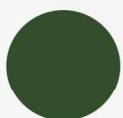
## Usages of Skylanes Plain Board

- Used as false ceiling
- To reduce heat and noise
- For an attractive & Aesthetic Ceiling

## Colours available



Terracotta red

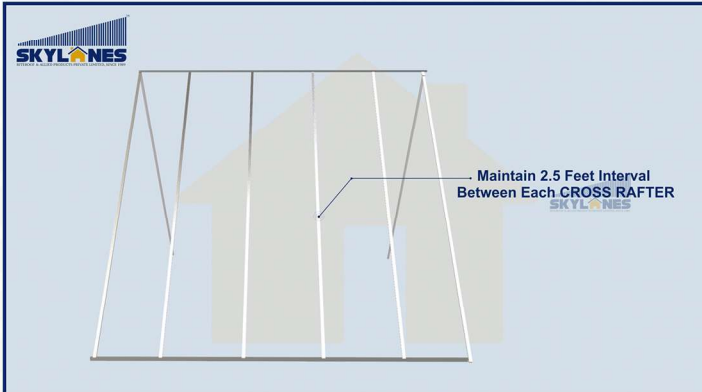


Military green



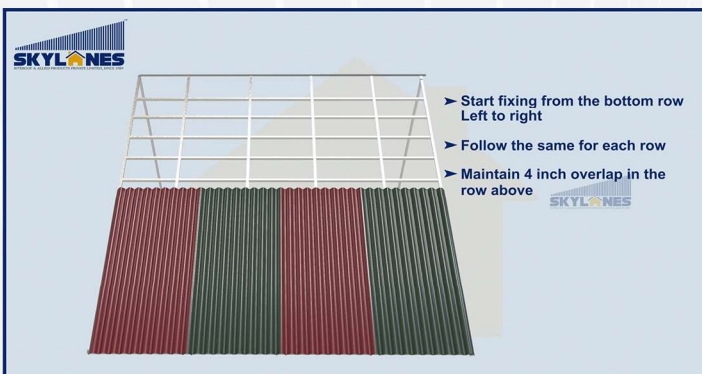
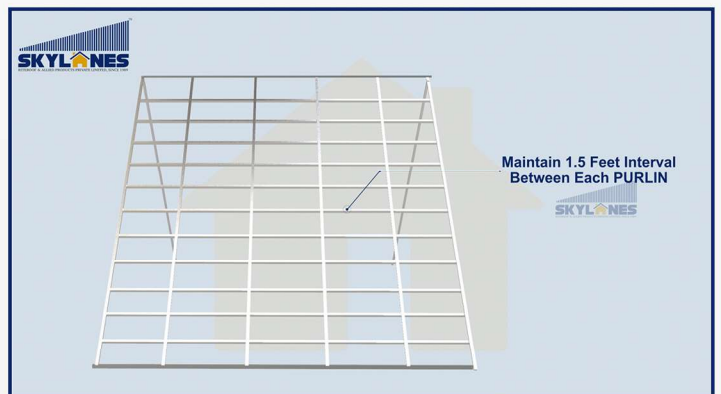
Matte brown

# Fixing Instructions



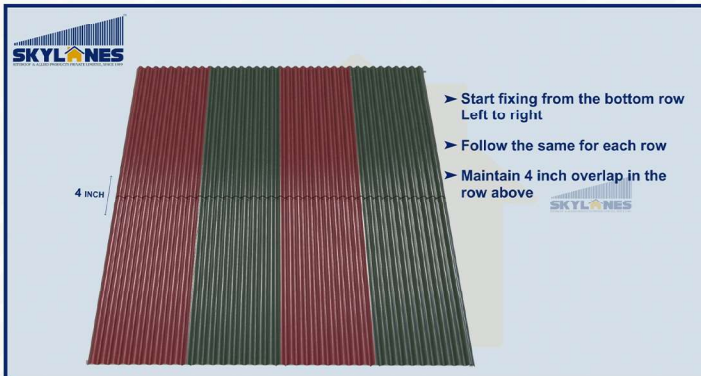
Maintain 2.5 Feet Interval Between each Cross Rafter

Maintain 1.5 Feet interval between each Purlin



Start fixing from the bottom row left to right  
Follow the same for each row  
Maintain 4 inch overlap in the row above

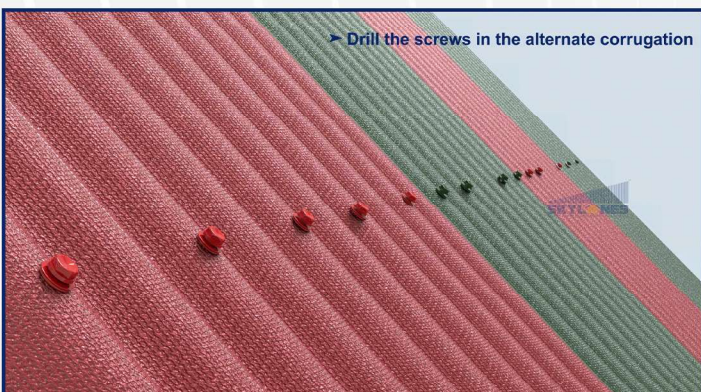
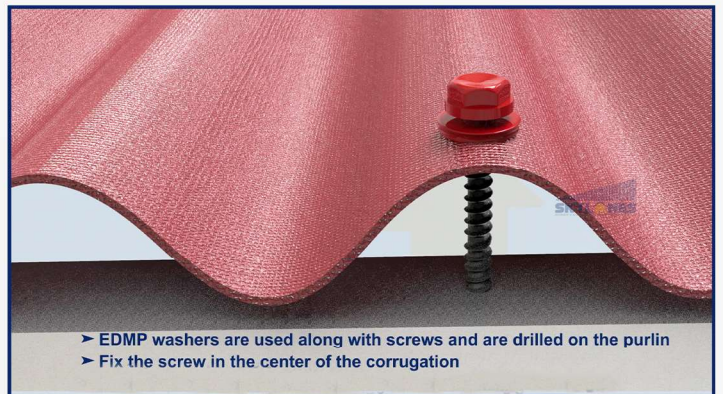
# Fixing Instructions



Start fixing from the bottom row left to right  
Follow the same for each row  
Maintain 4 inch overlap in the row above

EDMP Washers are used along with screws and are drilled on the purlin

Fix the screw in the center of the corrugation



Drill the screws in the alternate corrugation

# Fixing instructions

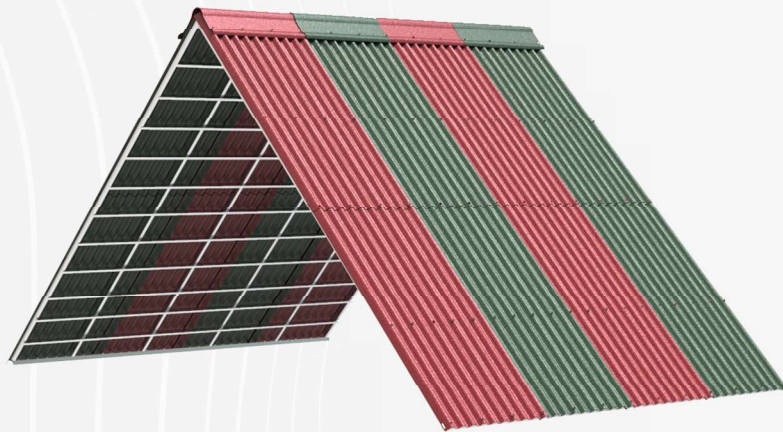


Drill the screws in every corrugation  
Maintain 6 inch overlap between sheet and ridge

Maintain minimum 4 inch overlap between 2 ridges



## Finished look

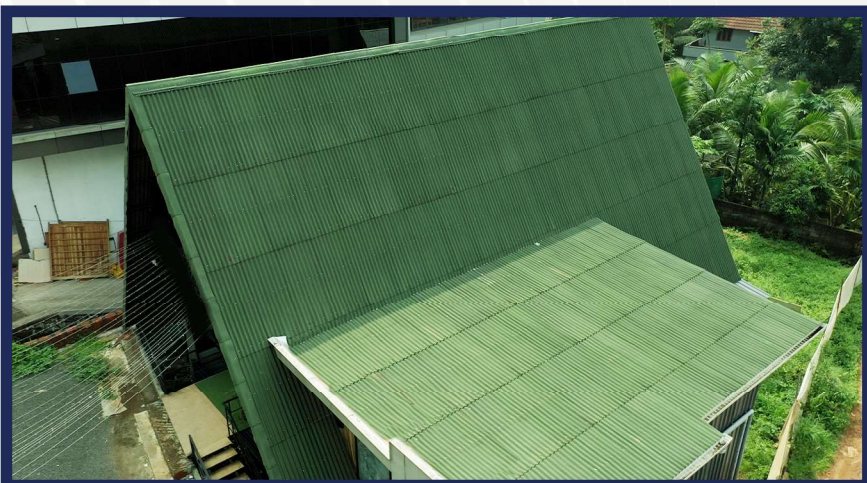


# Usages



Showroom

Farm house



Resort



# Usages



**Wood house**

**Godown**



**Warehouse**



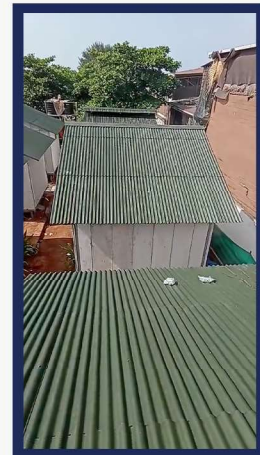
# Usages

**Ayurvedic Centre**  
(At Karnataka)



**Poultry Farm**  
(At Tamilnadu)

**Cottages**  
(At Goa)



**Terrace Roofing**  
(At Waynad)

# Certifications



**NATIONAL  
TEST HOUSE  
TESTED**



## National Test House Results

### NATURE OF TEST

- ▶ **Water absorption & Permeability test**
- ▶ **Breaking Load**  
(Load applied upto 203.9 kg)
- ▶ **Thermal Susceptibility**
- ▶ **Impact Resistance** (on the lines of IS 4020-P5)  
(dropping a 500g iron ball from a height of 1000mm)
- ▶ **Bitumen content**

### RESULTS OBTAINED

*Water absorption is 9.2% & No formation of water droplets observed on the unders surface of the sheet.*

*No tear observed.*

*No softening or change in colour or surface finish when kept in 60 C for 24 hrs.*

*No tear observed.*

*50.7 %.*

## Wind Resistance



High Wind Resistance

10 Years Warranty if fixed as per our fixing instructions **\*\*TERMS & CONDITIONS APPLY\*\***

# “ GREEN PRODUCT ”





## Manufacturing Unit



**Skylanes & Allied Products Pvt. Ltd.**  
Manufacturing Partner

ADD - #356, Llyods Road, Gopalapuram, Chennai -600 086.

E-mail : [riteroofasphalt@gmail.com](mailto:riteroofasphalt@gmail.com), [skylanes06@gmail.com](mailto:skylanes06@gmail.com)

Website : [www.skylanes.co.in](http://www.skylanes.co.in)

Website



[www.skylanes.co.in](http://www.skylanes.co.in)

Youtube



Our Channel



**Paramount Intercontinental Pvt. Ltd.**  
Marketing Partner

ADD - L-7, Ground Floor, Lane No-7, New Mahavir Nagar, New Delhi - 110018

Email : [sales@paramountinsulation.in](mailto:sales@paramountinsulation.in) Website : [www.paramountinsulation.in](http://www.paramountinsulation.in)

Customer Care: 011-47060000 (30-Lines) +91 9810363888



**Parabatai Technotech Pvt. Ltd.**  
Sales & Installation Partner



NATIONAL  
TEST HOUSE  
TESTED

